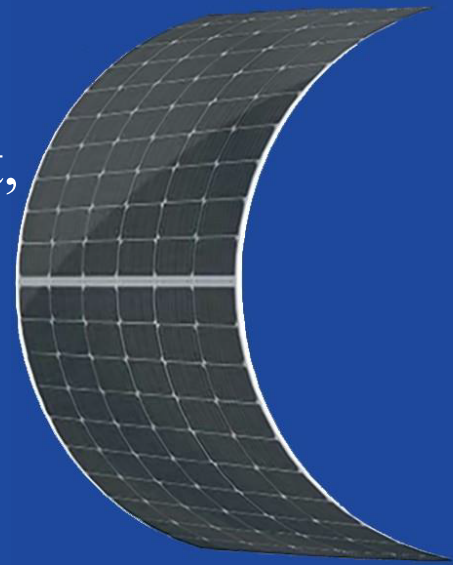


HG-L Lightweight & Flexible Series

Greatly decreased the product weight,
far less cost to install.

375W-395W



• Products Features

- Lightweight, Ultra-high flexibility, Easy to install.
- Reducing the adaptive loss to get higher power.
- Competitive weak light tolerance performance.
- Minimizing the shading affection to reduce power loss.
- The superior reliability has been proven through rigorous weathering test:
 - Sand and dust resistance, acid and alkali-resistance, salt mist resistance
 - Anti- PID
 - Hail shock resistance

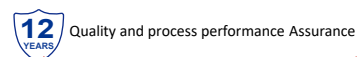
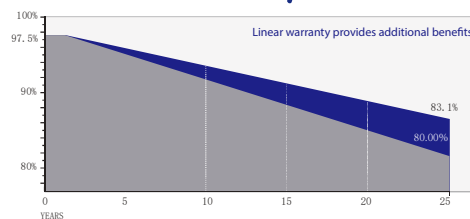
• Quality System

ISO9001
ISO14001
ISO45001

• Product Certification

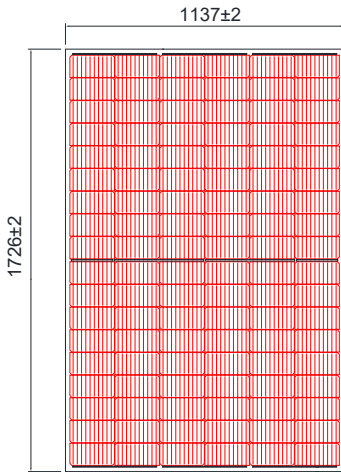


• Product Warranty



Address: No.633 Chengnan Avenue, Banqiao Industrial Park, Rongchang District, Chongqing, China

Email: hg@hg-energy-group.com



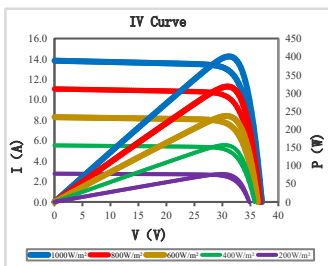
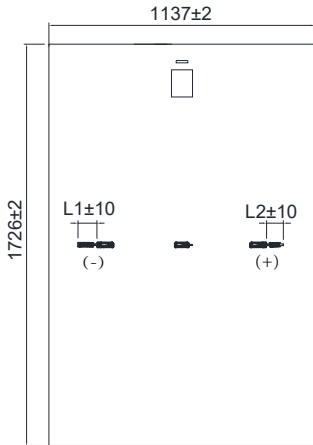
Electrical Parameters

Module Type	HG-L375-54CW		HG-L380-54CW		HG-L385-54CW		HG-L390-54CW		HG-L395-54CW	
	STC	NMOT	STC	NMOT	STC	NMOT	STC	NMOT	STC	NMOT
Maximum Power (P_{mp})	375W	279W	380W	283W	385W	286W	390W	290W	395W	294W
Open Circuit Voltage (V_{oc})	36.95V	34.36V	37.15V	34.55V	37.29V	34.68V	37.43V	34.81V	37.60V	34.97V
Short Circuit Current (I_{sc})	13.43A	10.84A	13.52A	10.91A	13.59A	10.97A	13.67A	11.03A	13.75A	11.10A
Max Power Voltage (V_{mp})	30.36V	28.78V	30.57V	28.97V	30.70V	29.10V	30.85V	29.24V	31.01V	29.39V
Max Power Current (I_{mp})	12.36A	9.69A	12.45A	9.77A	12.55A	9.83A	12.66A	9.92A	12.74A	10.00A
Module Efficiency STC (η_{STC})	19.1%		19.4%		19.6%		19.9%		20.1%	
Power Tolerance	0~+5W									
Maximum System Voltage	1500V DC									
Max Serie Fuse Rating	25A									

STC: irradiance 1000W/m² module temperature 25°C AM=1.5
 NMOT: irradiance of 800W / m², ambient temperature 20°C, and wind speed 1m / s
 The uncertainty of Pmax, Voc, Isc testing is ± 3%

Mechanical Specifications

External Dimension	1726mm*1137mm		
Type	Basic Version	Enhanced Version	High Performance Version
Thickness	3.0mm	3.3mm	3.6mm
Weight	6.5kg	7.6kg	8.8kg
Solar Cell	Mono crystalline 182*91mm, 108 (6*18)		
Frame	/		
GLASS	/		
Junction Box	IP68, 3diodes, MC4 compatible		
Output Cables	4.0mm ² (IEC), 300mm(+)/300mm(-) or Customized Length		



Temperature characteristic

Pmax Temperature Coefficient	-0.35 %/° C
Voc Temperature Coefficient	-0.26 %/° C
Isc Temperature Coefficient	+0.047 %/° C
Operating Temperature	-40 ~ +85 ° C
Nominal module operation temperature	45 ± 2 ° C

Package

Packing Unit	40HQ	17.5m platform truck
PCS/CTNS	68	68
Qty of Package	24	36
PCS/Packages	1632	2448