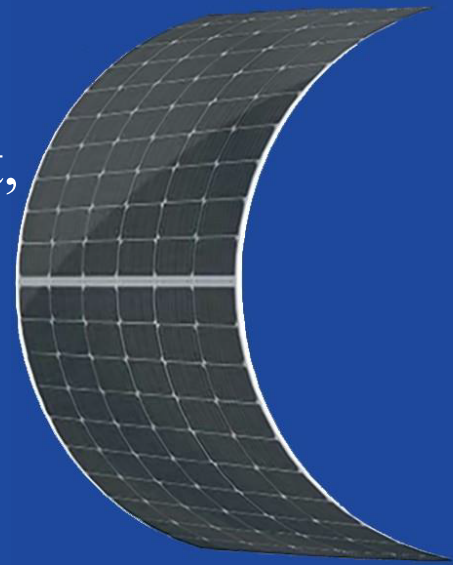


HG-L Lightweight & Flexible Series

Greatly decreased the product weight,
far less cost to install.

420W-440W



• Products Features

- Lightweight, Ultra-high flexibility, Easy to install.
- Reducing the adaptive loss to get higher power.
- Competitive weak light tolerance performance.
- Minimizing the shading affection to reduce power loss.
- The superior reliability has been proven through rigorous weathering test:
 - Sand and dust resistance, acid and alkali-resistance, salt mist resistance
 - Anti- PID
 - Hail shock resistance

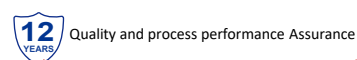
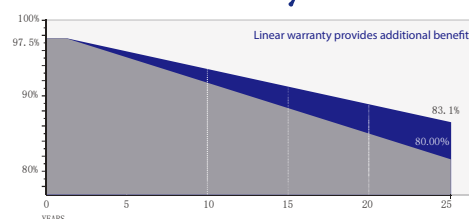
• Quality System

ISO9001
ISO14001
ISO45001

• Product Certification

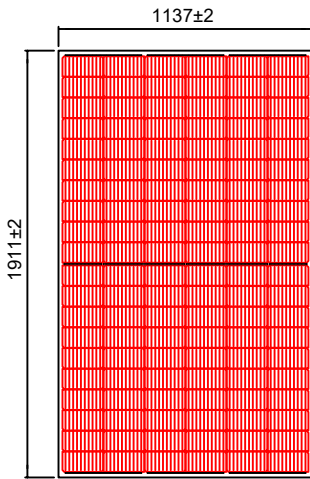


• Product Warranty



Address: No.633 Chengnan Avenue, Banqiao Industrial Park, Rongchang District, Chongqing, China

Email: hg@hg-energy-group.com



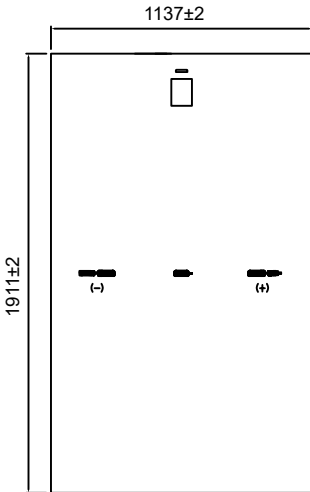
Electrical Parameters

Module Type	HG-L420-60CW		HG-L425-60CW		HG-L430-60CW		HG-L435-60CW		HG-L440-60CW	
	STC	NMOT	STC	NMOT	STC	NMOT	STC	NMOT	STC	NMOT
Maximum Power (P_{max})	420W	312W	425W	316W	430W	320W	435W	324W	440W	327W
Open Circuit Voltage (V_{oc})	41.13V	38.32V	41.28V	38.46V	41.43V	38.60V	41.58V	38.75V	41.73V	38.89V
Short Circuit Current (I_{sc})	13.48A	10.88A	13.55A	10.94A	13.62A	10.99A	13.69A	11.05A	13.76A	11.11A
Max Power Voltage (V_{mp})	33.88V	32.11V	34.03V	32.25V	34.18V	32.40V	34.33V	32.54V	34.48V	32.68V
Max Power Current (I_{mp})	12.41A	9.72A	12.51A	9.80A	12.60A	9.88A	12.68A	9.96A	12.77A	10.01A
Module Efficiency STC (η_s)	19.3%		19.6%		19.8%		20.0%		20.3%	
Power Tolerance	0~+5W									
Maximum System Voltage	1500V DC									
Max Serise Fuse Rating	25A									

STC: irradiance 1000W/m² module temperature 25°C AM=1.5

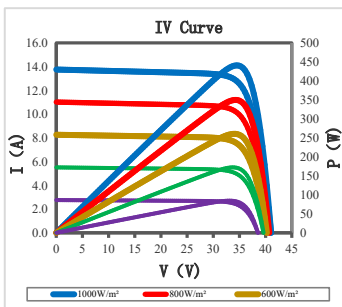
NMOT: irradiance of 800W / m², ambient temperature 20°C, and wind speed 1m / s

The uncertainty of Pmax, Voc, Isc testing is ± 3%



Mechanical Specifications

External Dimension	1911mm*1137mm		
	Basic Version	Enhanced Version	High Performance Version
Thickness	3.0mm	3.3mm	3.6mm
Weight	7.3kg	8.5kg	9.8kg
Solar Cell	Mono crystalline 182*91mm, 120 (6*20)		
Frame	/		
GLASS	/		
Junction Box	IP68, 3 diodes, MC4 compatible		
Output Cables	4.0mm ² (IEC), 300mm(+)/300mm(-) or Customized Length		



Temperature characteristic

Pmax Temperature Coefficient	-0.35 %/° C
Voc Temperature Coefficient	-0.26 %/° C
Isc Temperature Coefficient	+0.047 %/° C
Operating Temperature	-40 ~ +85 ° C
Nominal module operation temperature	45 ± 2 ° C

Package

Packing Unit	40HQ	17.5m platform truck
PCS/CTNS	68	68
Qty of Package	24	32
PCS/Packages	1632	2176