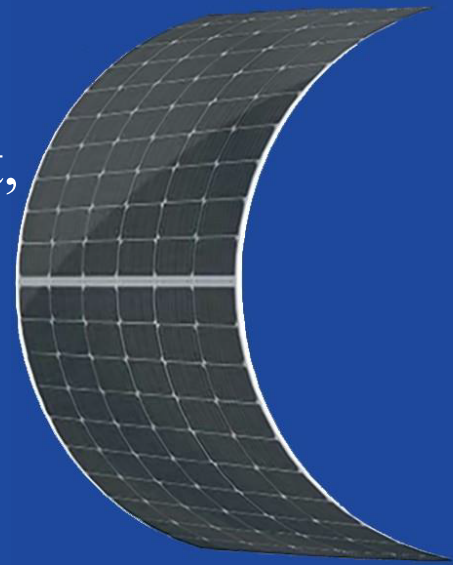


# HG-L Lightweight & Flexible Series

Greatly decreased the product weight,  
far less cost to install.

# 500W-530W



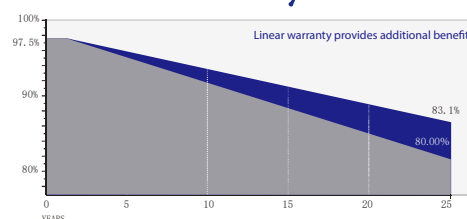
## • Products Features

- Lightweight, Ultra-high flexibility, Easy to install.
- Reducing the adaptive loss to get higher power.
- Competitive weak light tolerance performance.
- Minimizing the shading affection to reduce power loss.
- The superior reliability has been proven through rigorous weathering test:
  - Sand and dust resistance, acid and alkali-resistance, salt mist resistance
  - Anti- PID
  - Hail shock resistance

## • Quality System

ISO9001  
ISO14001  
ISO45001

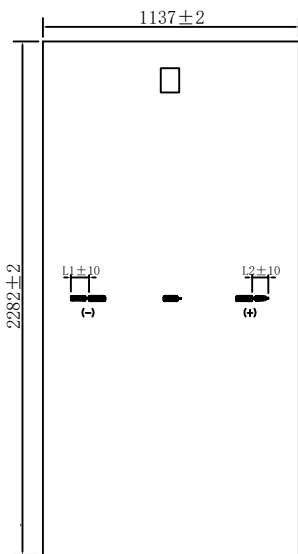
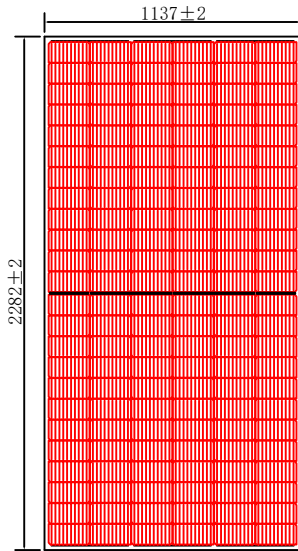
## • Product Warranty



Quality and process performance Assurance

**Address:** No.633 Chengnan Avenue, Banqiao Industrial Park, Rongchang District, Chongqing, China

**Email:** hg@hg-energy-group.com



## Electrical Parameters

Module Type	HG-L500-72CW		HG-L505-72CW		HG-L520-72CW		HG-L525-72CW		HG-L530-72CW	
	STC	NMOT	STC	NMOT	STC	NMOT	STC	NMOT	STC	NMOT
Maximum Power ( $P_{max}$ )	500W	372W	505W	376W	520W	387W	525W	391W	530W	394W
Open Circuit Voltage ( $V_{oc}$ )	49.00V	45.78V	49.15V	45.92V	49.60V	46.35V	49.75V	46.49V	49.90V	46.63V
Short Circuit Current ( $I_{sc}$ )	13.35A	10.77A	13.42A	10.83A	13.63A	11.00A	13.70A	11.06A	13.76A	11.11A
Max Power Voltage ( $V_{mp}$ )	40.45V	38.34V	40.60V	38.48V	41.05V	38.91V	41.20V	39.05V	41.35V	39.19V
Max Power Current ( $I_{mp}$ )	12.37A	9.70A	12.45A	9.77A	12.68A	9.95A	12.75A	10.01A	12.83A	10.05A
Module Efficiency STC ( $\eta_s$ )	19.3%		19.5%		20.0%		20.2%		20.4%	
Power Tolerance	0~+5W									
Maximum System Voltage	1500V DC									
Max Serie Fuse Rating	25A									

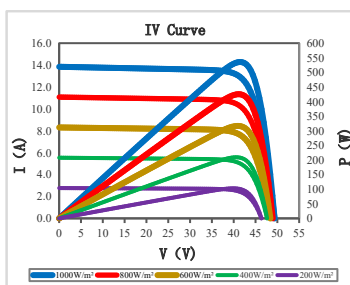
STC: irradiance 1000W/m<sup>2</sup> module temperature 25°C AM=1.5

NMOT: irradiance of 800W / m<sup>2</sup>, ambient temperature 20°C, and wind speed 1m / s

The uncertainty of Pmax, Voc, Isc testing is ± 3%

## Mechanical Specifications

External Dimension	2282mm*1137mm		
Version	Basic Version	Enhanced Version	High Performance Version
Thickness	3.0mm	3.3mm	3.6mm
Weight	8.7kg	10.2kg	11.7kg
Solar Cell	Mono crystalline 182*91mm, 144 (6*24)		
Frame	/		
GLASS	/		
Junction Box	IP68, 3 diodes, MC4 compatible		
Output Cables	4.0mm <sup>2</sup> (IEC), 300mm(+)/300mm(-) or Customized Length		



## Temperature characteristic

Pmax Temperature Coefficient	-0.35 %/°C
Voc Temperature Coefficient	-0.26 %/°C
Isc Temperature Coefficient	+0.047 %/°C
Operating Temperature	-40 ~ +85 °C
Nominal module operation temperature	45 ± 2 °C

## Package

Packing Unit	40HQ	17.5m platform truck
PCS/CTNS	68	68
Qty of Package	20	30
PCS/Packages	1360	2040