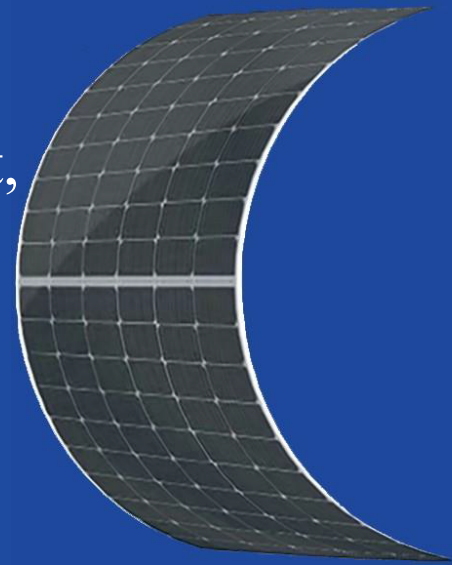


# HG-L Lightweight & Flexible Series

Greatly decreased the product weight,  
far less cost to install.

## 515W–535W



### • Products Features

- Lightweight, Ultra-high flexibility, Easy to install.
- Reducing the adaptive loss to get higher power.
- Competitive weak light tolerance performance.
- Minimizing the shading affection to reduce power loss.
- The superior reliability has been proven through rigorous weathering test:
  - Sand and dust resistance, acid and alkali-resistance, salt mist resistance
  - Anti- PID
  - Hail shock resistance

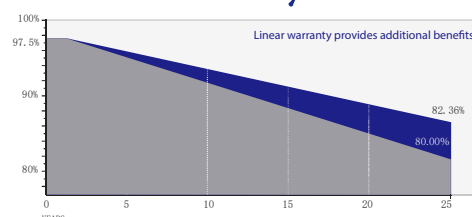
### • Quality System

ISO9001  
ISO14001  
ISO45001

### • Product Certification



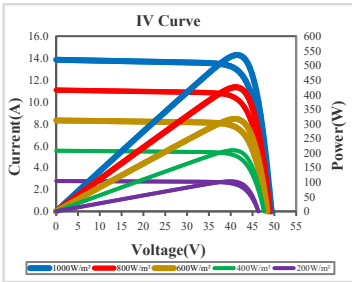
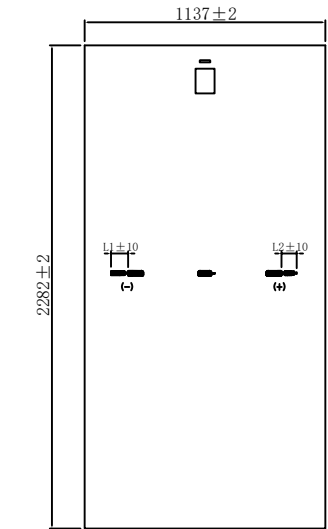
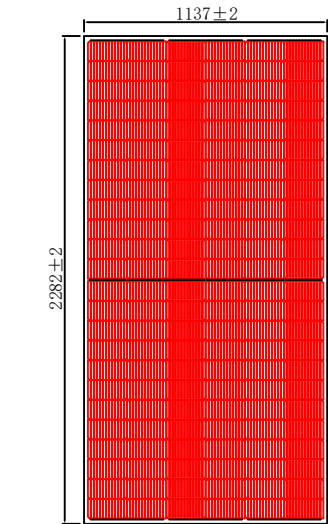
### • Product Warranty



Quality and process performance Assurance



Liner power Output Warranty



Electrical Parameters

Module Type	HG-L515-72CW		HG-L520-72CW		HG-L525-72CW		HG-L530-72CW		HG-L535-72CW	
	STC	NMOT	STC	NMOT	STC	NMOT	STC	NMOT	STC	NMOT
Maximum Power ( $P_{mp}$ )	515W	383W	520W	387W	525W	391W	530W	394W	535W	398W
Open Circuit Voltage ( $V_{oc}$ )	49.45V	46.21V	49.60V	46.35V	49.75V	46.49V	49.90V	46.63V	50.05V	46.77V
Short Circuit Current ( $I_{sc}$ )	13.56A	10.94A	13.63A	11.00A	13.70A	11.06A	13.76A	11.11A	13.83A	11.16A
Max Power Voltage ( $V_{mp}$ )	40.90V	38.77V	41.05V	38.91V	41.20V	39.05V	41.35V	39.19V	41.50V	39.33V
Max Power Current ( $I_{mp}$ )	12.61A	9.88A	12.68A	9.95A	12.75A	10.01A	12.83A	10.05A	12.90A	10.12A
Module Efficiency STC ( $\eta_s$ )	19.8%		20.0%		20.2%		20.4%		20.6%	
Power Tolerance	0~+5W									
Maximum System Voltage	1500V DC									
Max Serise Fuse Rating	25A									

STC:irradiance 1000W/m<sup>2</sup> module temperature 25℃ AM=1.5

NMOT: irradiance of 800W / m<sup>2</sup>, ambient temperature 20℃, and wind speed 1m / s

The uncertainty of Pmax, Voc, Isc testing is ± 3%

Mechanical Specifications

External Dimension	2282mm*1137mm		
Version	Basic Version	Enhanced Version	High Performance Version
Thickness	2.7mm	3.0mm	3.2mm
Weight	7.8kg	9.0kg	10.8kg
Solar Cell	Mono crystalline182*91mm, 144(6*24)		
Frame	/		
GLASS	/		
Junction Box	IP68,3diodes, MC4 compatible		
Output Cables	4.0mm <sup>2</sup> (IEC),300mm(+)/300mm(-)or Customized Length		

Temperature characteristic

Pmax Temperature Coefficient	-0.35 %/° C
Voc Temperature Coefficient	-0.26 %/° C
Isc Temperature Coefficient	+0.047 %/° C
Operating Temperature	-40 ~ +85 ° C
Nominal module operation temperature	45 ± 2 ° C

Package

Packing Unit	40HQ	17.5m platform truck
PCS/CTNS	68	68
Qty of Package	20	30
PCS/Packages	1360	2040